

Supplementary Content: Image Gallery

Images to accompany the *American Journal of Archaeology* publication:

Online Encounters with Museum Antiquities

Caitlin Chien Clerkin and Bradley L. Taylor

Link to this article: <https://doi.org/10.3764/aja.125.1.0165>

Published online 14 December 2020
American Journal of Archaeology Volume 125, Number 1
DOI: 10.3764/ajaonline1251.Clerkin.suppl

This online-only published content is freely available electronically immediately upon publication and can be distributed under the Creative Commons Attribution-NonCommercial License (CC BY-NC). This license allows anyone to reuse, remix, and build upon the content, as long as it is for legal noncommercial purposes; the new work must credit the author, the *AJA*, and the Archaeological Institute of America.



Images are not edited by the *AJA* to the same level as those in the printed article.

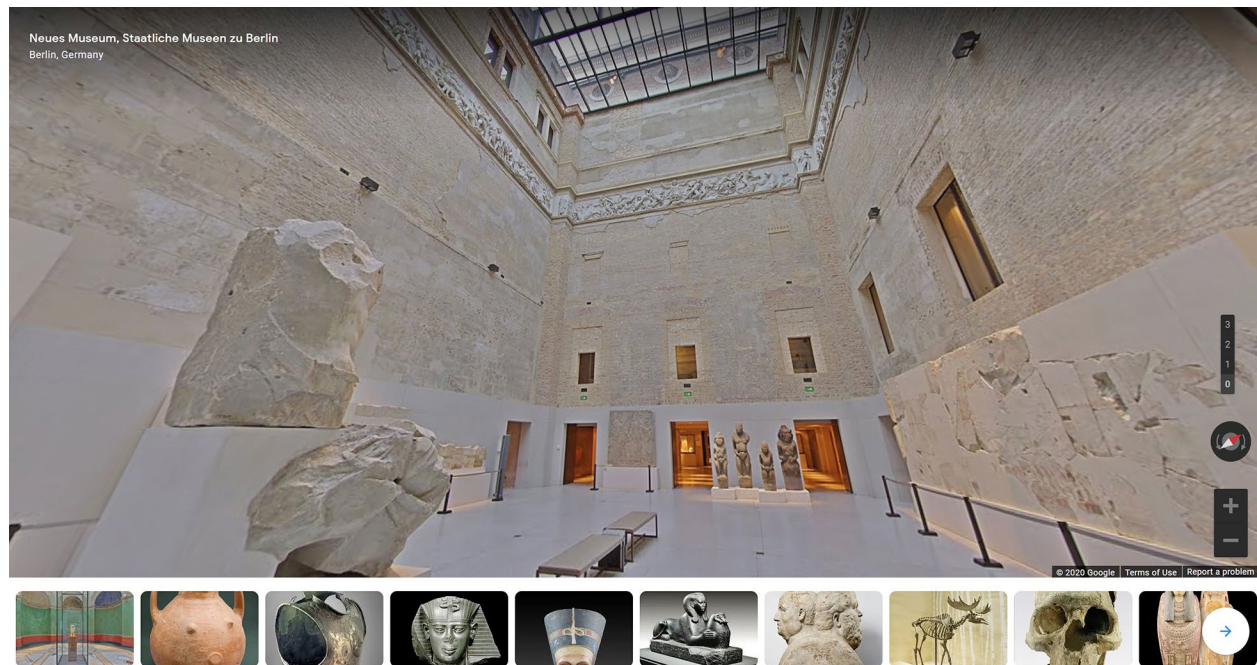


FIG. 1. Screenshot of Google Street View virtual tour of the Neues Museum, Berlin, on the Google Arts & Culture app (Neues Museum n.d.; © 2020 Google; courtesy Neues Museum).

Brooklyn Museum

Exhibitions Events Visit Shop

Collection About Education Support Press [Become a Member](#)

Collection Menu Search the Collection Advanced Search



Egyptian. Stela of Irethoreru, ca. 775-653 B.C.E. Syenite, 20 x 14 x 5 11/16 in. (50.8 x 35.5 x 14.5 cm). Brooklyn Museum, Gift of Alfred T. White and George C. Brackett, 07.422. Creative Commons-BY (Photo: Brooklyn Museum, CUR.07.422_wwg8.jpg)

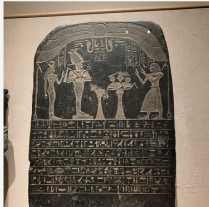


DOWNLOAD

ask Brooklyn Museum Supported by Bloomberg Philanthropies

Download our app and ask your own questions during your visit. Here are some that others have asked.

What is happening here?



At the top of the Stela of Irethoreru, you can see Osiris (the main figure on top of a pedestal) being praised by the individual on the right, Irethoreru. The table in between them holds offerings. Behind Osiris is another deity, his wife, the goddess Isis.

Can I get more info about this piece?

Stela of Irethoreru

Print
Email

EGYPTIAN, CLASSICAL, ANCIENT NEAR EASTERN ART
On View: 19th Dynasty to Roman Period, Martha A. and Robert S. Rubin Gallery, 3rd Floor

Beneath the wings of Horus the Behdetite, a manifestation of the solar god often found on stelae, or commemorative tablets, Irethoreru, at the right, makes an offering to the god of the underworld, Osiris, and his wife, Isis. The different shades of the stone have been successfully exploited for aesthetic purposes. Though the style of the representations is drawn from earlier periods, textual details suggest a Twenty-fifth Dynasty date.

CULTURE Egyptian

MEDIUM Syenite

- Place Made: Egypt

DATES ca. 775-653 B.C.E.

DYNASTY Dynasty 25

PERIOD Third Intermediate Period

DIMENSIONS 20 x 14 x 5 11/16 in. (50.8 x 35.5 x 14.5 cm) [\(show scale\)](#)



COLLECTIONS Egyptian, Classical, Ancient Near Eastern Art

MUSEUM LOCATION This item is on view on the 19th Dynasty to Roman Period, Martha A. and Robert S. Rubin Gallery, 3rd Floor

EXHIBITIONS

- Egypt Reborn: Art for Eternity
- Ancient Egyptian Art

ACCESSION NUMBER 07.422

CREDIT LINE Gift of Alfred T. White and George C. Brackett

RIGHTS STATEMENT [Creative Commons-BY](#)

CAPTION Egyptian. Stela of Irethoreru, ca. 775-653 B.C.E. Syenite, 20 x 14 x 5 11/16 in. (50.8 x 35.5 x 14.5 cm). Brooklyn Museum, Gift of Alfred T. White and George C. Brackett, 07.422. Creative Commons-BY (Photo: Brooklyn Museum, CUR.07.422_wwg8.jpg)

IMAGE installation, West Wing gallery 8 installation, CUR.07.422_wwg8.jpg. Brooklyn Museum photograph, 2006

CATALOGUE DESCRIPTION Black syennite (?) funerary stela of i'r.t-hr-i'r.w set up by his wife i'n-imn-n3y-nb.w. Above, in sunk relief, winged sun disk below which deceased makes offerings to Osiris and Isis. Eight lines of text. Condition: Excellent. Small fragment missing from left edge - otherwise perfect. Excellent workmanship.

RECORD COMPLETENESS

TAGS

+ Add Tag

| | | |
|---------------------|----------|--------------|
| 775-653 B.C.E. | black | Dynasty 25 |
| egypt | Egyptian | Female |
| Funerary | Goddess | horus |
| Horus the Behdetite | IMLS | Inscribed |
| irethoreru | isis | Nubian reign |

FIG. 2. Screenshot of Brooklyn Museum (Brooklyn, N.Y.) online collections record for the Stela of Irethoreru (Brooklyn Museum 07.422, acq. 1907) showing a travel mug as a visual scale and visitor-submitted questions and tags (Brooklyn Museum n.d.; digital image of object under CC BY 3.0 license; screenshot courtesy Brooklyn Museum).


Explore the Getty | Connect with Us | Shop | Search

The J. Paul Getty Museum

Exhibitions | Collection | Education | Research and Conservation | Publications | Public Programs | About the J. Paul Getty Museum

Collections Search

Situla with a Frieze of Athletic Contests



Main Image

DOWNLOAD This image is available for download, without charge, under the Getty's Open Content Program.

Not on view due to temporary Getty closure

Alternate Views

Main View, Front (A) | Back (B) | Right Profile (AB) | Left Profile (BA) | Top | Bottom

Object Details

Title: Situla with a Frieze of Athletic Contests
 Artist/Maker: Unknown
 Culture: Roman
 Place: Roman Empire (Place Created)
 Date: A.D. 75–100
 Medium: Bronze
 Object Number: 96.AC.41
 Dimensions: 9.5 x 14 cm (3 3/4 x 5 1/2 in.)

See more

Encircling the round body of this bronze situla, nude athletes, boxers, and wrestlers compete fiercely under the supervision of a judge who carries palm branches and a wreath. Prizes—a kantharos or cup, basins on stands, and wreaths—are displayed between the groups of figures. Vessels similar in shape and technique have been found in Gaul, a Roman province incorporating present-day France; these bronze situlae were probably manufactured there. Furthermore, the low rounded form of this vessel recalls the shape of Gallic vessels made of clay or glass. This situla originally had a handle, which is now missing. Rough areas on the shoulder of the situla mark the points where the handle was once attached.

Provenance

Exhibitions | Bibliography

by 1572 to 1577 - Private Collection (Rome, Italy)

by 1663 - Charles Patin, French, 1633 - 1693 (Paris, France)

by 1985 - Korban, Ltd. (London, England)

- 1988 - Brian T. Ailken (Acanthus Gallery), 1952 - 2009 (New York, New York), sold to Barbara and Lawrence Fleischman, 1988.

1988 - 1996 - Barbara Fleischman and Lawrence Fleischman, American, 1925 - 1997 (New York, New York), sold to the J. Paul Getty Museum, 1996.

This information is published from the Museum's collection database. Updates and additions stemming from research and imaging activities are ongoing, with new content added each week. Help us improve our records by sharing your corrections or suggestions.

The text on this page is licensed under a Creative Commons Attribution 4.0 International License, unless otherwise noted. Images and other media are excluded.

The content on this page is available according to the International Image Interoperability Framework (IIF) specifications. You may view this object in Mirador – a IIF-compatible viewer – by clicking on the IIF icon below the main image, or by dragging the icon into an open IIF viewer window.

FIG. 3. Screenshot of J. Paul Getty Museum (Los Angeles) online collections record for the Situla with a Frieze of Athletic Contests (J. Paul Getty Museum 96.AC.41, acq. 1996; in private collection in Rome by ca. 1572–1577) showing provenance history, with links to groups of objects related through provenance (J. Paul Getty Museum n.d.; screenshot © J. Paul Getty Trust, use granted under CC BY-NC license, courtesy J. Paul Getty Trust; digital image and text content depicted in screenshot under CC BY 4.0 license, courtesy of the Getty's Open Content Program).

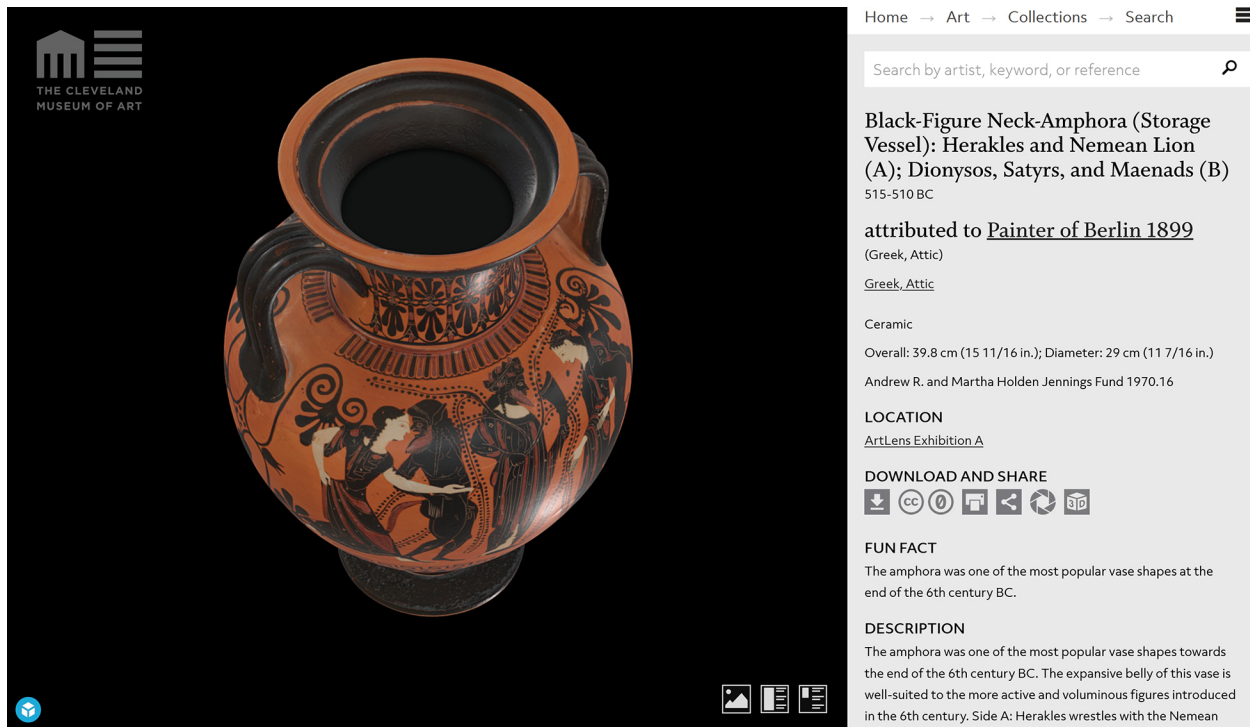


FIG. 4. Screenshot of Cleveland Museum of Art online collection record for “Black-Figure Neck-Amphora (Storage Vessel): Herakles and Nemean Lion (A); Dionysos, Satyrs, and Maenads (B)” (Cleveland Museum of Art 1970.16, acq. 1970) showing embedded digital 3D model (Cleveland Museum of Art n.d.[a]; digital 3D model under CC0 dedication: screenshot courtesy Cleveland Museum of Art).



FIG. 5. Screenshot of *Peter Weibel & I # 6*, by Christine Karababa, 2017, a 3D-model remix of Apollo Belvedere (from digital 3D model of plaster cast in National Gallery of Denmark, Copenhagen, Royal Cast Collection) with 3D scan of Austrian artist and curator Peter Weibel (Karababa 2017; artwork under CC BY 4.0 license).